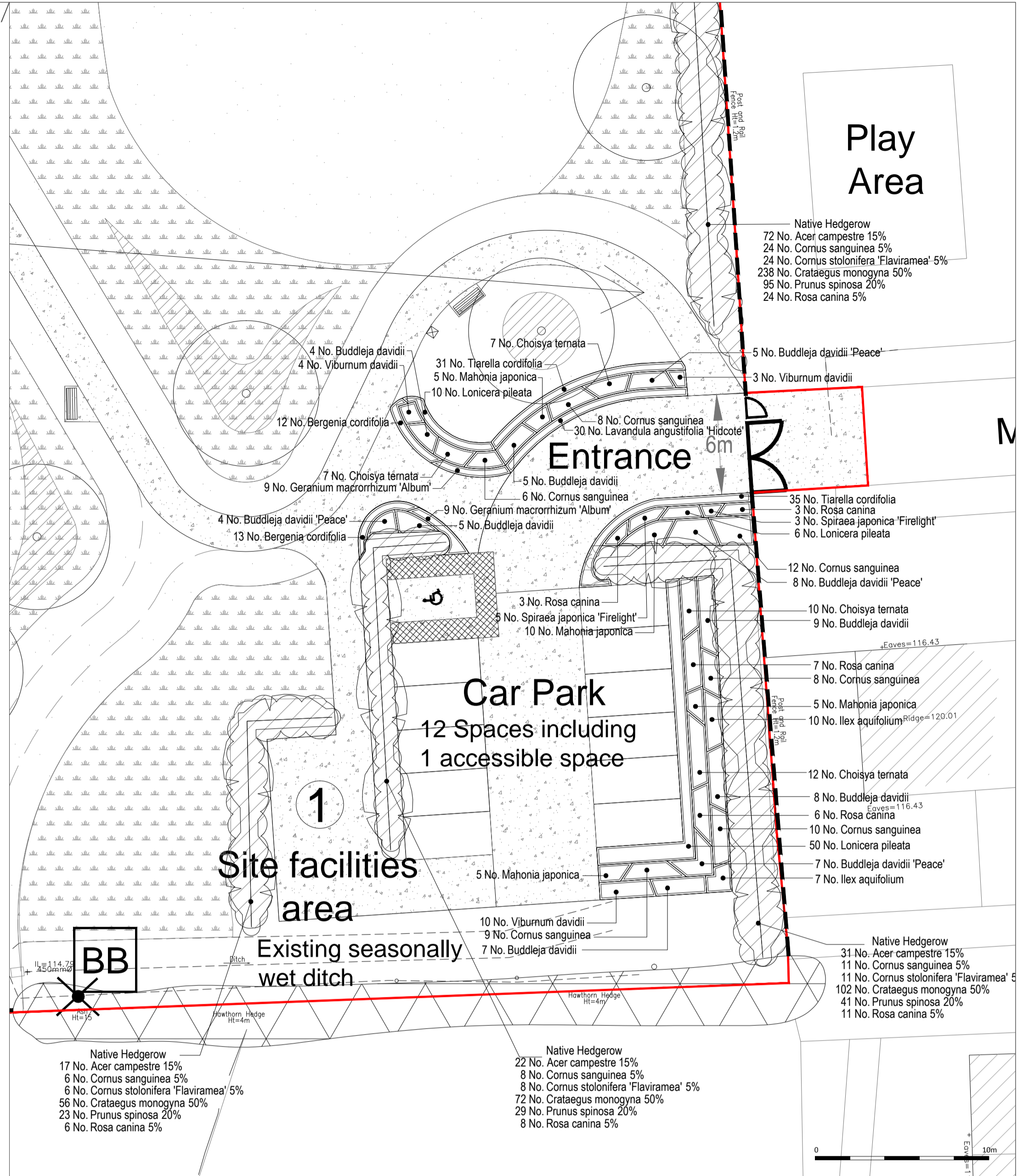


Site Plan
Scale 1:500



Planting to Car Park and Site Facilities Area
Scale 1:200

Planting Schedule

Trees	Number	Species	Specification	Density
	12	Fagus sylvatica	Extra Heavy Standard: 5 brks. C. Clear Stem 175-200cm	Counted
	12	Acer campestre	Extra Heavy Standard: 5 brks. C. Clear Stem min. 200cm	Counted
	8	Quercus robur	Extra Heavy Standard: 5 brks. C. Clear Stem 175-200cm	Counted

Shrubs	Number	Species	Specification	Density
	24	Buddleja davidii 'Peace'	Branched: 3 brks. C	2m ²
	36	Buddleja davidii	Branched: 3 brks. C	2m ²
	66	Lonicera pileata	Bushy: 3 brks. C	3m ²
	25	Mahonia japonica	Leader(s): C	3m ²
	35	Choisya ternata	Bushy: 3 brks. C	3m ²
	30	Lavandula angustifolia 'Hidcote'	Bushy: 5 brks. C	5m ²
	53	Cornus sanguinea	Branched: 3 brks. C	3m ²
	17	Viburnum davidii	Bushy: 3 brks. C	3m ²
	8	Spiraea japonica 'Firelight'	Bushy: 3 brks. C	3m ²
	19	Rosa canina	Branched: 3 brks. C	2m ²
	17	Ilex aquifolium	Leader with Lateral(s): C	3m ²
	142	Acer campestre	1+1: BR: Branched: 2 brks (BR 0.3Cr) Double Staggered at 0.5m offset	
	49	Cornus sanguinea	1+1: Branched: 2 brks (BR 0.3Cr) Double Staggered at 0.5m offset	
	49	Cornus stolonifera 'Flaviramea'	1+1: Branched: 2 brks (BR 0.3Cr) Double Staggered at 0.5m offset	
	480	Crataegus monogyna	1+1: BR: Branched: 2 brks (BR 0.3Cr) Double Staggered at 0.5m offset	
	188	Prunus spinosa	1+1: Branched: 2 brks (BR 0.3Cr) Double Staggered at 0.5m offset	
	49	Rosa canina	1+1: Branched: 2 brks (BR 0.3Cr) Double Staggered at 0.5m offset	

Herbaceous	Number	Species	Specification	Density
	25	Bergenia cordifolia	Full Pot: C	5m ²
	18	Geranium macrorrhizum 'Album'	Full Pot: C	4m ²
	66	Tiarella cordifolia	Full Pot: C	5m ²

- Application Boundary
- Existing
 - Trees to be retained
 - Trees to have crown removed but trunk retained as a standing pole for habitat value
 - Hedges
 - Contours (1m)
- Proposed
 - Trees to be planted prior to burials
 - Trees to be planted after burials
 - Specification: 1+2: Transplant, Bare Root, 80-100cm
 - Protection: Tubex Standard Tree Shelter by Green-tech or similar.
 - Species:
 - Acer campestre
 - Fagus sylvatica
 - Quercus robur
 - Native hedge/structure planting
 - Amenity grass
 - Specification: Germinal Seeds mix A22 Low Maintenance or similar.
 - Meadow grass
 - Specification: Emsgate Seeds EM2 Standard Meadow Mixture or similar.
 - Bulbs - To be planted in drifts as shown on plan at a density of 10 per m². Total area 200m². Specification: Grade 10/12
 - Species:
 - Narcissus 'Thalia'
 - Galanthus nivalis
 - Amenity planting
 - Footpaths and vehicle access route (Material: Lafarge Tarmac; Utiicolour Buff Gravel or similar)
 - Parking bays (Material: Buff gravel with stabilization system to prevent migration)
 - Timber bench
 - Timber clad litter bin
 - Site facilities area - may include water supply, compost bins, general waste bins
 - Existing post and wire fence - Height 1.2m
 - Proposed timber post and rail fence - Height 1.2m
 - Double leaf gate - Open width 4m
 - Single leaf gates
 - Entrance - Open width 1.2m
 - To cattle shed area - Open width 1.2m
 - Bat boxes
 - Woodcrete design (such as Schwelger box designs nos. 1FQ and/or 2F), suitably located and erected by a suitably qualified ecologist, and in accordance with the manufacturer's recommendations, all in accordance with the Ecology Appraisal (EDP1736_03a)

Notes
All bitmac roads and pavements on site to be constructed to the relevant local authority public highway adoptable standards.

All gates to be lockable for security.

Burials
Area for graves - 723 plots (9x4ft) (2.74x1.22m)

Area for natural burial - 757 plots (9x4ft) (2.74x1.22m)

Area for cremated remains - 4551 plots (2x2ft) (0.60x0.60m)

Cattle Shed
In accordance with the findings of the Ecological Appraisal (C_EDP1736_03a) the cattle shed is to be retained in its current state as a bat roosting site with public access prohibited to prevent disturbance and for health and safety reasons.

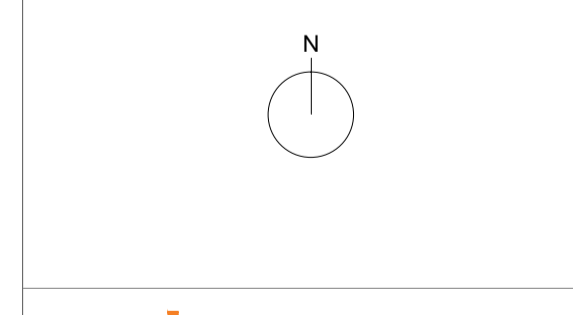
Should future proposals require that the building is to be affected by demolition or restoration works, or similar, such works would need to be completed under a Natural England EPS mitigation licence, the completion of which would require a greater roost survey effort in order to characterize the roost type present.

Trees
All tree work to be in accordance with the Findings of Arboricultural Assessment (T_EDP1736_02b). All trees to be retained to be protected in accordance with this report.

In accordance with the 'Ecological Appraisal' (C_EDP1736_03a) prior to tree surgery works a thorough tree assessment for the likelihood to support roosting bats (including aerial tree surveys where necessary) should be completed. Tree works that would result in the loss of a confirmed bat roost would require an EPS mitigation licence.

Bat boxes to be located in retained existing mature trees by a qualified ecologist.

Scale 1:200



client
Winchcombe Town Council

project title
New Cemetery off Gretton Road, Winchcombe

drawing title
Landscape Masterplan

date 21 JULY 2014
drawing number EDP 1736/21a
scales 1:500 & 1:200
drawn by JW
checked TR